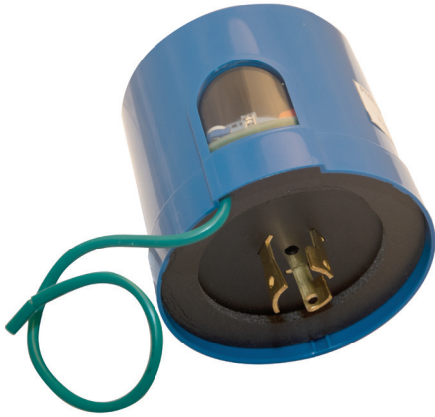


Photocontrol Surge Protector with External Ground Wire

20kV U_{oc} 10kA I_n 25kA I_{max}



Surge Protection Features

- Series or Parallel connection
- L-N, L-G, N-G protection
- Retrofit application
- Safety thermal fusing
- Diagnostic light
- 10-year product warranty
- Optional GDT*
- Compatible with all standard
- 3-pin and 7-pin receptacles
- Lifetime warranty for GDT* models

Applications

- Highway & Street Lighting
- Parking Lots & Garages
- Bus & Train Depot Lighting
- Digital Signs & Billboards
- Paths & Walkways
- Parks & Stadiums

*GDT – gas discharge tube/MOV hybrid circuit eliminates leakage and follow on current extending the life of the surge protection circuit.

Photosensor Specifications

- Turn-on: 10 lux, or customized
- Turn-off: 15 lux, or customized
- Off/On ratio is 1.5:1 average
- Time Delay ON: 6-12 seconds, or customized
- Time Delay OFF: 6-18 seconds, or customized
- Fail On: For safety reasons
- Operating Temperature: 40° to + 70°C
- Power Consumption: 1.0 watt average @120V

Surge Protection Performance Characteristics

Product Model	Operating Voltage	I_n	I_{MAX}	U_{oc}	MCOV	Voltage Protection Rating	Thermal Fusing	3-Mode Protection	Gas Tube	Diagnostic Light	Operating Temperature	Connection	Product Warranty
SPC277C1-W10SAL	120V-277V	10kA	25kA	20kV	320V	1300V	✓	✓	✓	✓	-40F ~ +185F	Series	Lifetime
SPC277C1-W10SLL	120V-277V	10kA	25kA	20kV	320V	1150V	✓	✓		✓	-40F ~ +185F	Series	10-years