

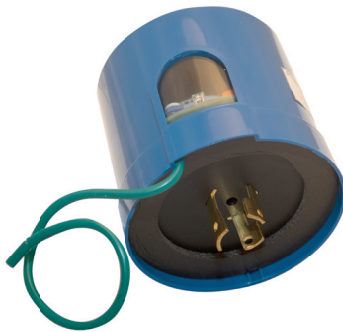
## Retrofit Receptacle Surge Protection

The Retrofit surge line includes a Fast Plugin surge module, a photocontrol surge protector, and a shorting cap surge protector, and all with external ground wires for connection to the lighting fixture housing. Ideal for DOT's, Municipalities, and Utilities that have identified high risk areas or troubled sites due to lightning issues or power related problems.



### Fast Plugin Surge Module with External Ground Wire

- Retrofit application
- 10kA, 15kA or 25kA I<sub>max</sub> maximum surge capacity
- 5kA or 10kA I<sub>n</sub> nominal discharge current
- 10kV or 20kV U<sub>oC</sub>/V<sub>max</sub> maximum overvoltage current
- Operating voltage: 120V, 277V, 347V, 480V
- Diagnostic Indicator



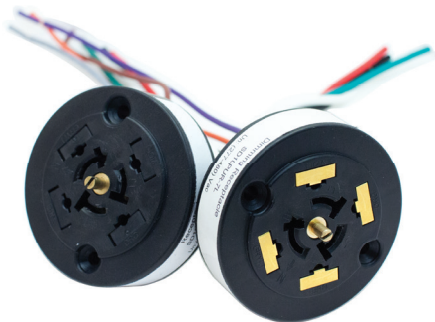
### Photocontrol Surge Protector with External Ground Wire

- Retrofit application
- 10kA, 15kA or 25kA I<sub>max</sub> maximum surge capacity
- 5kA or 10kA I<sub>n</sub> nominal discharge current
- 10kV or 20kV U<sub>oC</sub>/V<sub>max</sub> maximum overvoltage current
- Operating voltage: 120V, 277V, 347V, 480V
- Diagnostic Indicator



### Shorting Cap Surge Protector with External Ground Wire

- Retrofit application
- 10kA, 15kA or 25kA I<sub>max</sub> maximum surge capacity
- 5kA or 10kA I<sub>n</sub> nominal discharge current
- 10kV or 20kV U<sub>oC</sub>/V<sub>max</sub> maximum overvoltage current
- Operating voltage: 120V, 277V, 347V, 480V
- Diagnostic Indicator



### 3-pin & 7-pin Receptacle

- Patented design with grounding pin & ground wire
- For use with Fast Plugin Surge Module, Photocontrol Surge Protector, & Short Cap Surge Protector